

4-WAY CASSETTE

NEW

Model No.
 S-18PU1H5 S-30PU1H5
 S-22PU1H5 S-40PU1H5
 S-25PU1H5 S-45PU1H5
 S-28PU1H5 S-50PU1H5

TECHNICAL FOCUS

- Compact design
- Low sound levels
- DC fan motor for increased efficiency
- Powerful drain pump gives 850 mm lift
- Lightweight design
- Optional nanoe™ X (CZ-CNEXU1)



Accessories

Panel



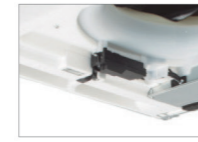
CZ-KPU3

Selectable Remote Controller



CZ-RD513C CZ-RL013U

Optional nanoe™ X Kit



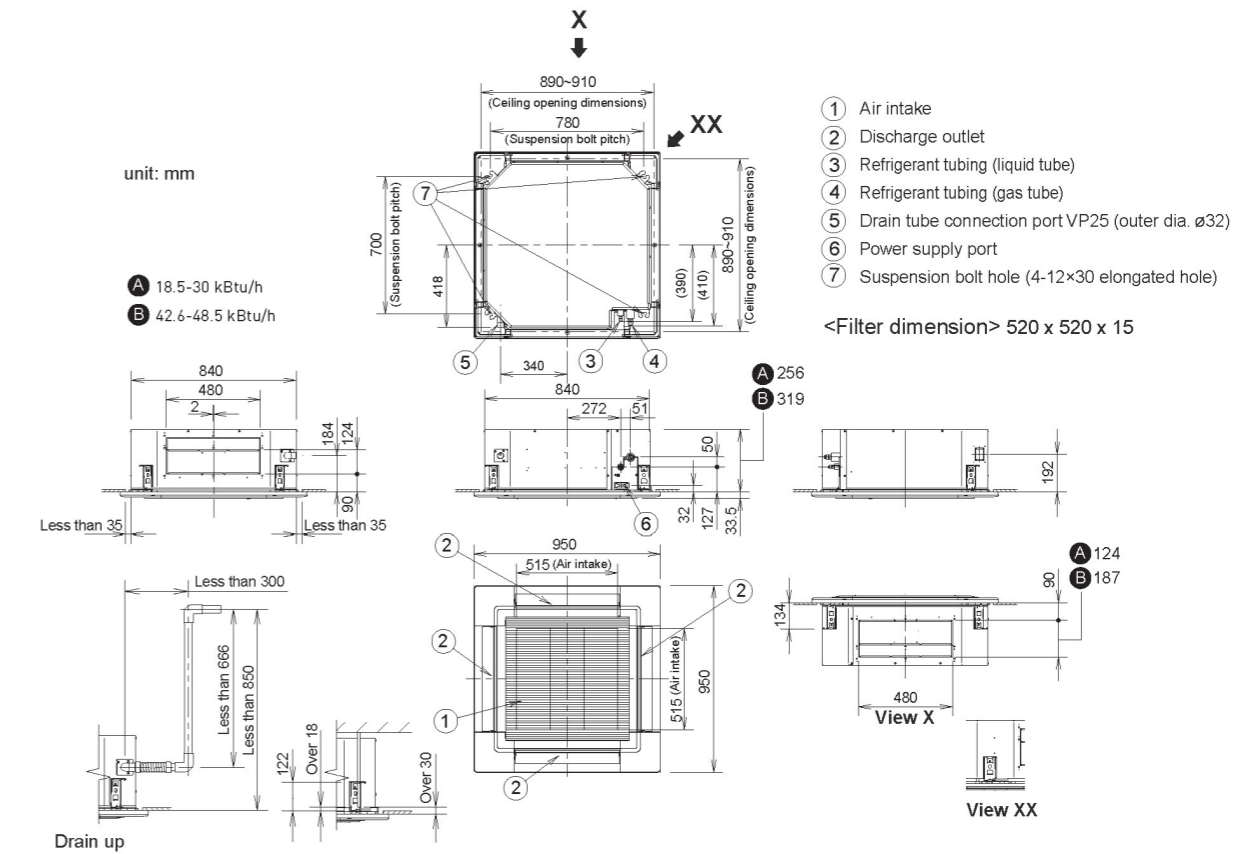
CZ-CNEXU1

Coner Panel



CZ-KNELU1

Dimensions



* Adjust the suspension bolt length so that the gap from the lower ceiling surface becomes 30 mm or more (18 mm or more from the lower surface of the body) as shown in the figure. When the suspension bolt length is long, it hits the ceiling panel and installation is not possible.

Capacity [Btu/h]		18,500	23,000	25,000	28,000	30,000	30,000	42,600	45,000	48,500	
Power Source	V/Phase Hz	220 V, 1Ø Phase - 50 Hz					380 V, 3Ø Phase - 50 Hz				
Indoor		S-18PU1H5	S-22PU1H5	S-25PU1H5	S-28PU1H5	S-30PU1H5	S-30PU1H5	S-40PU1H5	S-45PU1H5	S-50PU1H5	
Outdoor		U-18PV1H5	U-22PV1H5	U-25PV1H5	U-28PV1H5	U-30PV1H5	U-30PV1H8	U-40PV1H8	U-45PV1H8	U-50PV1H8	
Panel		CZ-KPU3	CZ-KPU3	CZ-KPU3	CZ-KPU3	CZ-KPU3	CZ-KPU3	CZ-KPU3	CZ-KPU3	CZ-KPU3	
Cooling Capacity: Rated	kW	5.42	6.74	7.33	8.21	8.79	8.79	12.49	13.19	14.22	
	Btu/h	18,500	23,000	25,000	28,000	30,000	30,000	42,600	45,000	48,500	
Current	A	7.8	9.5	10.3	13.2	13.6	5.2	7.0	7.5	8.6	
Power Input: Rated	kW	1.69	2.05	2.22	2.84	2.93	2.93	4.07	4.37	4.90	
	W/W	3.2	3.29	3.30	2.89	3.00	3.00	3.07	3.02	2.90	
EER		10.91	11.22	11.25	9.85	10.23	10.23	10.47	10.30	9.89	
	Btu/hW										
Indoor Unit											
Air Volume	m³/min	24.0	25.0	25.0	25.0	25.0	25.0	33.0	33.0	33.0	
Sound Pressure Level [Hi/Lo]	dB [A]	41 / 32	41 / 32	41 / 32	41 / 33	41 / 33	41 / 33	45 / 37	45 / 37	46 / 41	
Sound Power Level [Hi/Lo]	dB	56 / 47	56 / 47	56 / 47	56 / 48	56 / 48	56 / 48	60 / 52	60 / 52	61 / 56	
Dimension	Indoor [H×W×D]	mm	256 × 840 × 840	256 × 840 × 840	256 × 840 × 840	256 × 840 × 840	256 × 840 × 840	256 × 840 × 840	319 × 840 × 840	319 × 840 × 840	
	Panel [H×W×D]	mm	950 × 950 × 44	950 × 950 × 44	950 × 950 × 44	33.5 × 840 × 840	950 × 950 × 44	950 × 950 × 44	950 × 950 × 44	950 × 950 × 44	
Net Weight	Indoor	kg	19	20	20	20	20	22	22	22	
	Panel	kg	4	4	4	4	4	4	4	4	
Outdoor Unit											
Sound Pressure Level	dB [A]	52	52	52	56	56	57	56	56	56	
Sound Power Level	dB	68	68	68	71	71	71	70	70	70	
Dimension	Outdoor [H×W×D]	mm	695 × 875 × 320	695 × 875 × 320	695 × 875 × 320	695 × 875 × 320	695 × 875 × 320	750 × 875 × 345	996 × 980 × 370	996 × 980 × 370	
Net Weight		kg	44	55	55	57	57	58	86	90	
Piping Connection	Gas Pipe	mm (inch)	12.70 (1/2")	15.88 (5/8")	15.88 (5/8")	15.88 (5/8")	15.88 (5/8")	15.88 (5/8")	15.88 (5/8")	15.88 (5/8")	
	Liquid Pipe	mm (inch)	6.35 (1/4")	9.52 (3/8")	9.52 (3/8")	9.52 (3/8")	9.52 (3/8")	9.52 (3/8")	9.52 (3/8")	9.52 (3/8")	
Pipe Length	Min~Max	m	7.5 - 30	7.5 - 30	7.5 - 30	7.5 - 45	7.5 - 45	7.5 - 45	7.5 - 50	7.5 - 50	
Elevation Difference		m	20	20	20	25	25	25	30	30	
Maximum Chargeless Length	Max	m	7.5	7.5	7.5	7.5	7.5	7.5	30	30	
Additional Gas		g/m	20	25	25	30	30	30	50	50	
Operating Range, Outdoor	Min~Max	°C	16 - 43	16 - 43	16 - 43	16 - 43	16 - 43	16 - 43	16 - 43	16 - 43	